

Case Study

Kulicke and Soffa

Kulicke and Soffa is one of the world's leading suppliers of semiconductor assembly equipment, tools and materials, employing over 2,570 employees at their 33 facilities in Asia, Europe and the United States of America. Since 1951 the company has been developing innovative products to serve a wide range of applications in the manufacture and assembly of semiconductor devices, enabling the increasing complexity of packages, higher productivity and yields at the lowest cost.

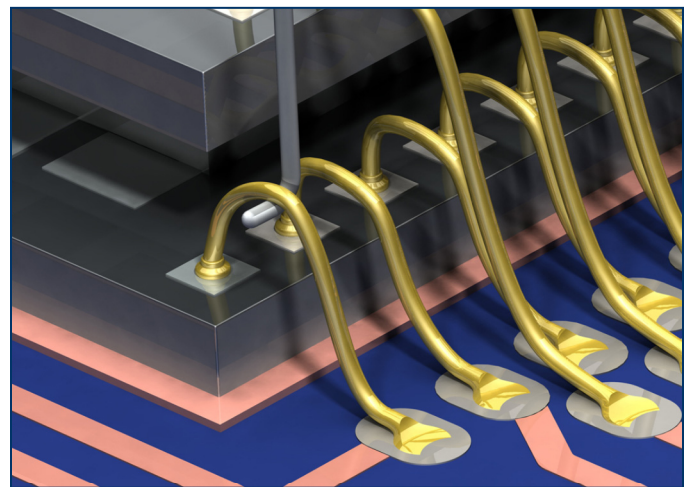
In 2000 the operations division of Kulicke and Soffa established a manufacturing centre for their wire bonding equipment, located in Singapore. From the beginning, the manufacturing centre has utilized Dage bond testing equipment in the production of their automatic and manual wire bonders to ensure that the highest quality standards are met.

Using Dage

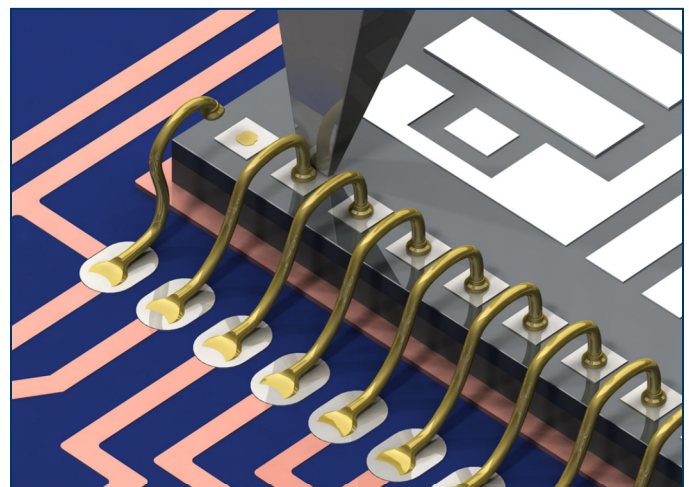
The manufacturing team performs wire pull and ball shear tests using a Dage 4000 and Dage 5000 machine to verify the integrity of the wire bonds and solder balls formed by the wire bonders. "Since day one the Dage equipment has played a vital role in our production process", said Mr Yong Soong Ooi, Production Engineering Manager. "The fast and accurate data provided by the Dage bond testers enables us to maintain a rigid production schedule, safe in the knowledge that we are manufacturing equipment that meets Kulicke and Soffa's stringent quality standards."

“ The fact that we do not need to buy additional equipment to perform die shear tests represents a significant saving for us both in the financial outlay for a new machine and the time required to re-train our operators. ”

Mr Yong Soong Ooi, Production Engineering Manager, Kulicke and Soffa



Wire pull test.



Ball shear test.

For further information please contact:
Tel: +44(0)1296 317800 Fax: +44(0)1296 435408
Email: dpi-specialproducts@dage-group.com
www.dage-group.com

In 2009 the centre is extending their operation to include the manufacture of die bonding equipment for which they will utilize their Dage 4000 machine for quality assurance testing. Mr Yong remarks, “The multi-purpose capability of the Dage bond testers provides us with a great level of flexibility which is essential in a production environment such as ours and is especially important in the future expansion of our production being as seamless and economical as possible.”

Why Dage?

In the process of establishing the new manufacturing centre, bond testing equipment from several suppliers was evaluated with the aim of choosing the best solution on the market. Dage’s solid reputation and experience were significant in the final selection. However Mr Yong explains that it was one particular factor that proved to be most decisive, “The vast majority of our customers use Dage equipment, so it was the obvious choice for us to use the same testing platform in order to ensure good data correlation; this way there can’t be any dispute about the results.”

Count on Dage

Since purchasing the Dage bond testers in 2000 they have proven to be extremely reliable with the manufacturing centre experiencing very minimal down-time. Mr Yong sums up by saying, “We can always rely upon the Dage equipment to be in full working order which enables us to meet our aggressive production targets. On the rare occasions when we do require assistance from Dage, the customer support team is extremely responsive and has exceptional levels of technical expertise.”

“ I strongly recommend Dage bond testing equipment and will continue to in the future.”

Mr Yong Soong Ooi, Production Engineering Manager, Kulicke and Soffa