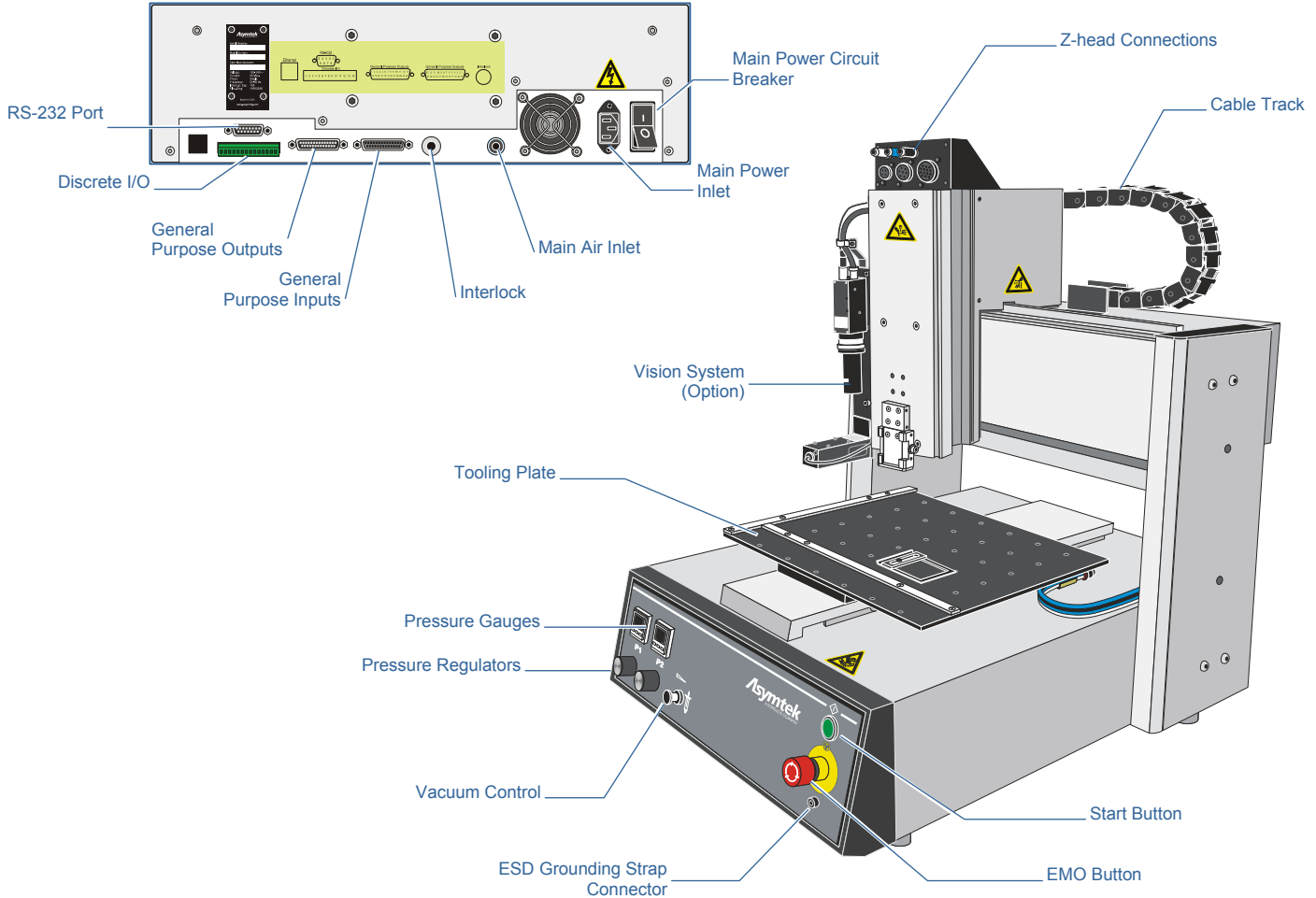
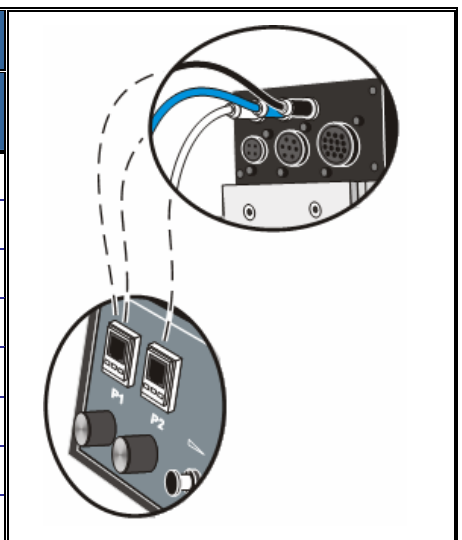


Quick Start Installation Guide



Dispensing Valve Configuration		
Valve Model	Valve Air Connection	Fluid Pressure Connection
DJ-9000/DJ-2100 DispenseJet® Series	P1	P2
DV-7000/DV-8000 Heli-Flow® Pumps*	N/A	P2
DV-01	N/A	P2
DV-07	P1	P2
DV-03HPA	P1	P2
DV-05A	P1	P2
DV-07	P1	P2
DV-09	P1	P2



*When using the DV-7000 or DV-8000 valve, make sure the Valve Selector (U27) switch, located on the main board inside the electronics pan, is set to the proper position. The default setting is DV-8000. The U27 switch setting does not affect any of the other valves. Refer to the *DispenseMate 550 Series User Guide* for additional information.

Uncrating and Placing

1

1. Locate and remove the envelope on the outside of the shipping crate. Open the envelope and locate the shipping list.
2. Cut the four bands that secure the lid to the crate. Remove the lid, four cardboard corners and plastic sleeve.
3. Remove the poly bag from the unit and cut the bands that secure the dispenser to the crate bottom.
4. Place the dispensing system near the installation site.
5. Remove all perimeter packaging material from the dispensing area.
6. Remove all tie wraps, tape, foam packaging material, and warning tags from the Dispensing Head and Tooling Plate.



NOTE Location of packaging materials to be removed is indicated by the presence of red warning tags.



7. Use the flat bar and hammer to remove the crate lid and unpack the accessories crate.
 - ▶ As you unpack each item inside of the box, identify the item, locate it on the shipping list, and place a checkmark next to the item.

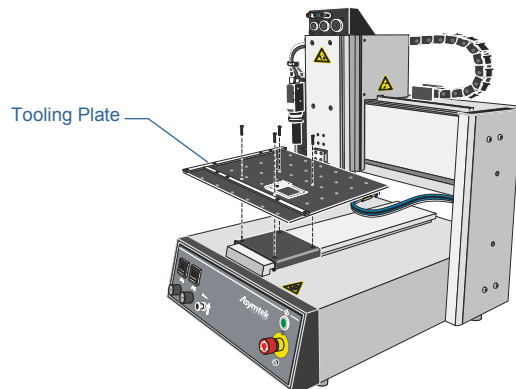
Installing and Leveling the Tooling Plate

2

DispenseMate Series 550 Dispensing Systems are supplied with tooling plates that are adjusted to $\pm 127\text{mm}$ of the X-Y dispense level plane. The tooling is removed from the system prior to shipping to prevent damage and must be reattached during installation. Attach the tooling plate using the four (4) m4 x 0.7 screws supplied.



NOTE The leveling set screws are preset at the factory and should not need adjustment.



Installing the Dispensing Valve

3

Prior to installing the Dispensing Valve, loosen the six (6) screws on the Z-axis face plate (Figure A) and slide the face plate up so that it is flush with the Z-axis extrusion (Figure B). Tighten the screws on the face plate. To install the Dispensing Valve, slide the dovetail bracket (included with the Dispensing Valve) into the Valve Mounting Bracket on the Z-axis face plate. Secure by tightening the socket head cap screw on the Valve Mounting Bracket (Figure C). Refer to the manual applicable to your particular Dispensing Valve for additional information.

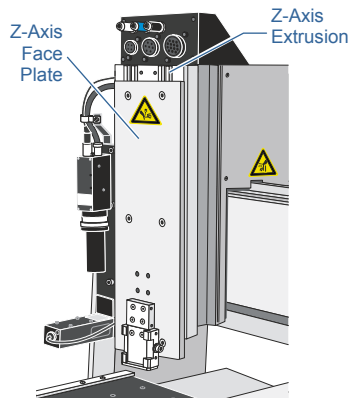


Figure A

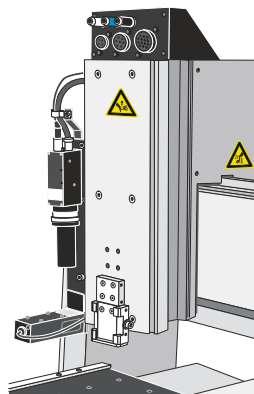


Figure B

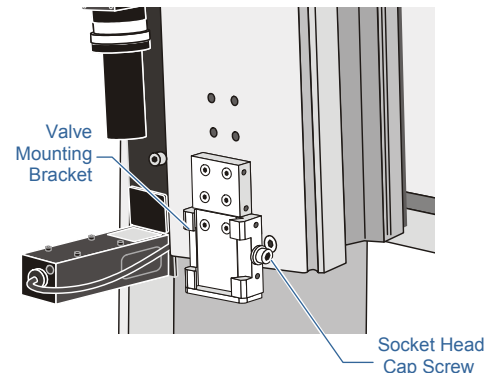


Figure C

Adjusting the Height Sensor Probe

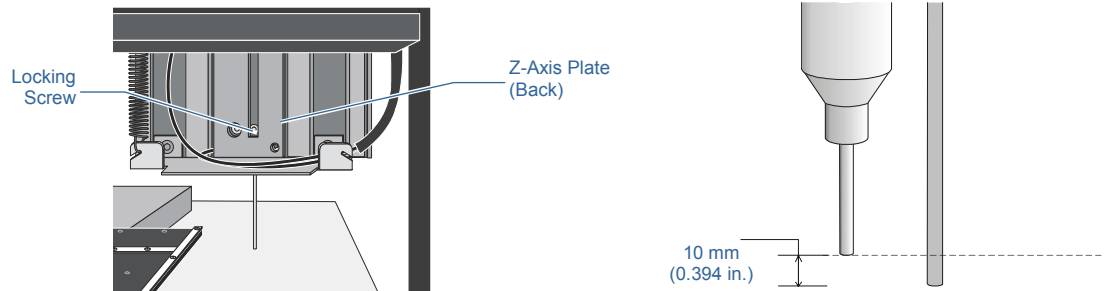
4



NOTE The Height Sensor Probe must be adjusted each time a different type of Dispensing Valve or a different length of needle is installed.

Adjust the Height Sensor Probe as follows:

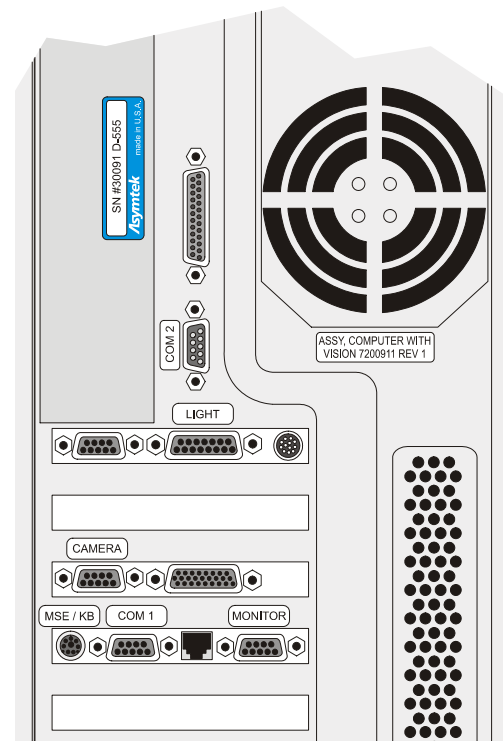
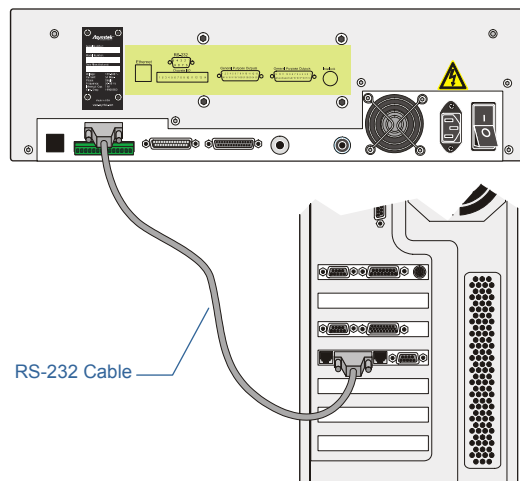
1. Manually move the Dispensing Head down.
2. Loosen the Height Sensor locking screw at the back of the Z-axis plate.
3. Move the probe to the desired location (approximately 10 mm below the needle tip in the gear down position).
4. Tighten the Height Sensor locking screw. Do not overtighten.



Installing the Computer

5

1. Locate the Computer, remove all packaging material, and place it in the desired location.
2. Connect the RS-232 cable (P/N 7200897) to the rear of the DispenseMate and to COM 1 on the Computer.
3. Connect the Monitor cable to the Monitor port and hand-tighten the thumbscrews.
4. Connect the keyboard and mouse to the Y-Cable and connect the Y-Cable to the MSE/KB connection at the back of the Computer.
5. If the optional Automatic Pattern Recognition System is installed, connect the "Light Source" Cable (P/N 06-2215-01) and "Camera" Cable (P/N 06-0078-00) to the Computer.
6. Plug the Computer power cable and the Monitor power cable into the facility outlet.



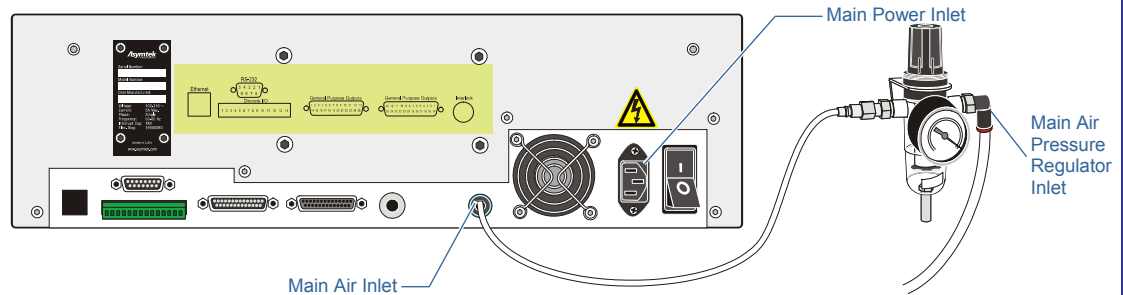
Connecting the Power and Air Supply

6

1. Unpack the Main Power cable and remove all packing material including plastic wrappers and tie wraps.
2. Plug the female end of the power cable into the Main Power Inlet on the back of the dispensing system. Plug the male end of the power cable into the facility power source.
3. Attach a quick disconnect air fitting (customer supplied) to the facility air hose.
4. Connect the facility air hose to the Main Air Pressure Regulator Inlet.
5. Connect the outlet of the Main Air Pressure Regulator to the Main Air Inlet on the rear of the dispensing system.



NOTE The maximum air supply pressure should not exceed 100 psi (689 kPa).



System Power-up

7

1. Turn the Main Power Switch on the back of the system to the **ON (I)** position.
2. Turn the Computer power switch to the **ON (I)** position.
 - ▶ The system Computer should begin the boot up sequence.
3. Check the EMO button to see if it has been activated. If it has been activated, deactivate it by turning the red knob clockwise until the knob pops out.
4. Make sure the interlock signal is not interrupted. Close the dispensing system front doors if applicable.
5. Press **Start** on the Control Panel.
 - ▶ The dispensing system should be in a powered-up state and the digital gauges should be on. If not, make sure the power cord is properly connected to the dispensing system and to an active facility power source.

Helpful Hints

- Always consider safety when working around automated equipment.
- Wear gloves and safety glasses when necessary.
- Disconnect and place a warning tag on the Main Power Inlet before performing maintenance or service.
- Disconnect and place a warning tag on the Main Air Pressure Gauge and Regulator before performing maintenance or service.
- When adjusting pressure with regulators, always reduce the pressure below the desired range before turning the pressure back up.
- There is an important correlation between the position of the Dispensing Valve tip and the Height Sensor Probe. Always adjust the Height Sensor Probe after a valve or needle length change.



This equipment is regulated by the European Union under WEEE Directive (2002/96/EC). See www.nordson.com for information about how to properly dispose of this equipment.

Asymtek
A NORDSON COMPANY

Asymtek Headquarters
2762 Loker Avenue West
Carlsbad, CA 92010-6603 USA
Tel: (760) 431-1919
1-800-ASYMTEK (1-800-279-6835)