



# **Low Pressure Fluid Regulator**

***Owner's Manual***

## NOTICE

This is an Asymtek publication, which is protected by copyright. Original copyright date 2004. No part of this document may be photocopied, reproduced, or translated to another language without the prior written consent of Asymtek. The information contained in this publication is subject to change without notice.

### Manuals on the Internet

For the convenience of Asymtek customers and field service representatives, copies of this manual can be downloaded from:

<http://www.asymtek.com/support/manuals.htm>

### Contact Us

Asymtek welcomes requests for information, comments, and inquiries about its products. General information about Asymtek can be found on the Internet at [www.asymtek.com](http://www.asymtek.com)

<b>Asymtek</b>	
<b>Headquarters</b>	<b>2762 Loker Avenue West Carlsbad, CA 92010-6603 USA</b>
<b>Toll Free:</b>	<b>1-800-ASYMTEK (1-800-279-6835)</b>
<b>Tel:</b>	<b>+1-760-431-1919</b>
<b>Fax:</b>	<b>+1-760-431-2678</b>
<b>E-mail:</b>	<b><a href="mailto:info@asymtek.com">info@asymtek.com</a></b>
<b>Website:</b>	<b><a href="http://www.asymtek.com">www.asymtek.com</a></b>
<b>Technical Support</b>	
<b>USA:</b>	<b>1-800-ASYMTEK (1-800-279-6835)</b>
<b>Other regions:</b>	<b><a href="http://www.asymtek.com">www.asymtek.com</a> Tech Support</b>

### Trademarks

Asymtek<sup>®</sup> is a registered trademark of Asymtek.

Delrin<sup>®</sup> and Teflon<sup>®</sup> are registered trademarks of DuPont.

Rulon<sup>®</sup> is a registered trademark of the Saint-Gobain Performance Plastics.

# 1 Introduction

The Low Pressure Fluid Regulator provides accurate, positive fluid pressure control to spray guns, fluid dispensing applicators, or atomizing heads. The Low Pressure Fluid Regulator is installed at circulating line take-offs or with pumps. It is used to reduce main line pressure and maintain the desired fluid pressure to the dispensing applicator, spray gun, or atomizing head.



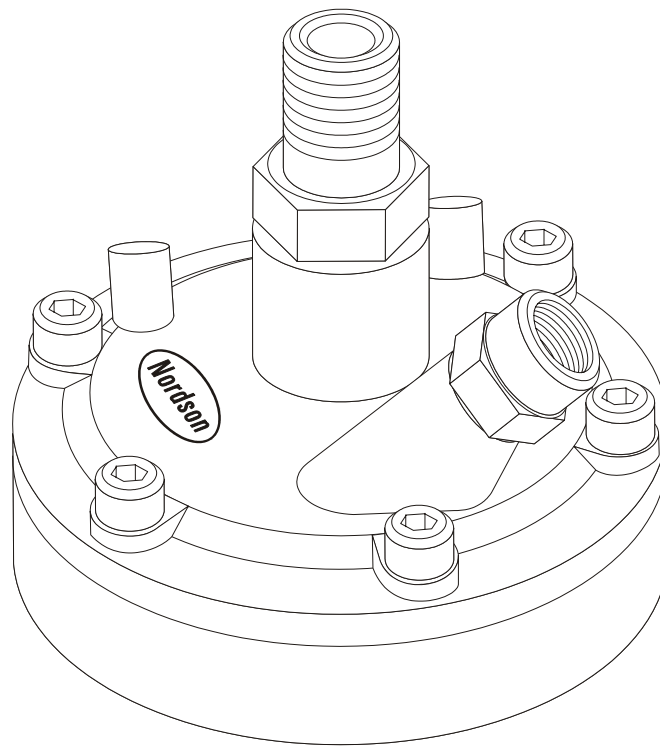
**WARNING!**

Allow only qualified personnel to perform the following tasks. Follow the safety instructions in this document and all other related documentation.



**WARNING!**

System or material pressurized. Relieve pressure before opening. Failure to observe may result in serious injury.



*Figure 1-1 Low Pressure Fluid Regulator*

## 2 Specifications

Table 2-1 Specifications

Fluid inlet pressure:	Maximum 17.2 bar (250 psi)
Regulated fluid pressure range:	0.34-6.9 bar (5-100 psi)
Maximum flow capacity:	5.3 l/min (1.4 gal/min) at 7 bar (100 psi) inlet pressure, and 3.5 bar (50 psi) regulated pressure
Wetted parts:	Tungsten carbide, Rulon, Teflon, 303 series stainless steel, Nylon; Delrin
Dimensions (with connectors):	Height: 6.2 mm (3.0 in.) Diameter: 93.7 mm (3.690 in.) Weight: approximately 0.9 kg (2 lb)
Air input:	1/8-in. NPT
Fluid output:	1/4-in. NPTF

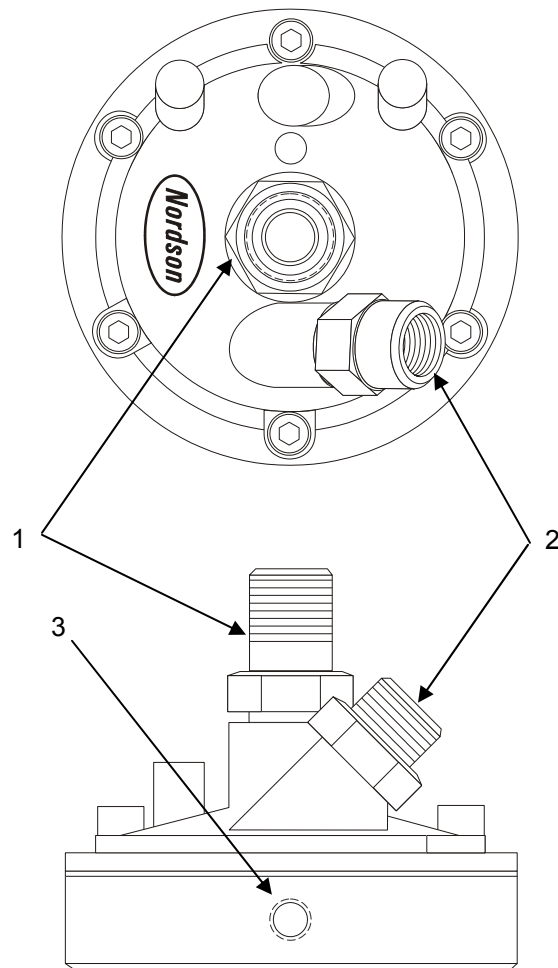
# 3 Installation



**NOTES** For optimum flow and minimum pigment settling, mount the Low Pressure Fluid Regulator with the spray gun fluid supply line outlet at the bottom.

The regulator is supported by the tubing connections and does not require any mounting brackets.

1. Connect the regulator fluid supply line to the inlet (1).
2. Connect the gun fluid supply line to the outlet (2).
3. Connect the air supply line to the air inlet (3).



Item	Description
1	Inlet (regulator fluid supply line)
2	Air supply inlet
3	Outlet (gun fluid supply line)

Figure 3-1 Low Pressure Fluid Installation

## 4 Operation

Clean and test the system thoroughly before admitting fluid to the Low Pressure Fluid Regulator. This avoids contaminants from clogging or damaging the regulator.



**NOTE** Always use the lowest possible air and fluid pressures for your application. High pressures cause premature spray nozzle and pump wear.

1. Partially relieve pressure in the gun fluid supply hose to ensure the correct gauge reading before reducing the regulator pressure.
2. Use an air regulator with at least 51-mm (2-in.) diameter diaphragm to control the fluid regulator.
3. Apply air pressure to the regulator.



**NOTE** To increase fluid pressure, increase the input air pressure. The output fluid pressure is remotely regulated by input air pressure controls.



### **WARNING!**

Do not substitute the fittings furnished with this regulator with any other plastic or metal fittings. Sparking caused by non-grounded metal fittings or by electrostatic breakdown in the pin holing of plastic fittings may cause fire or explosion. Refer to your spray gun manual for proper fluid inlet fittings.

### **Flushing**

- Flush frequently after installation and between system operation.
- Always use the lowest possible pressure when flushing.
- Use a compatible solvent whenever the rest of the system is flushed.
- Flush until thoroughly clean.

# 5 Troubleshooting

This section identifies symptoms and probable causes of operational difficulties with the Low Pressure Fluid Regulator. If you encounter difficulties not listed here, or if the suggested recoveries do not correct the problem, please contact Asymtek Technical Support.



**WARNING!**

System or material pressurized. Relieve pressure before opening. Failure to observe may result in serious injury.



**NOTE**

Check all suggested corrective actions in Table 5-1 before disassembling the Low Pressure Fluid Regulator.

Table 5-1 Basic Troubleshooting

Problem	Possible Cause	Corrective Action
No pressure regulation	Damaged or clogged air regulator or line	Clear obstruction in line. Service the regulator if necessary.
	Damaged diaphragm	Replace the diaphragm.
Fluid leaks from under bonnet	Bonnet is loose	Tighten the screws.
	Worn gasket	Replace the gasket.
Pressure increases above setting	Damaged or clogged air regulator or line	Clear obstruction in line. Service the regulator if necessary.
	Damaged diaphragm	Replace the diaphragm.
	Seat is leaking	Replace the gasket, seat, and ball.
Pressure drops below setting	Damaged or clogged air regulator or line	Clear obstruction in line. Service the regulator if necessary.
	Empty or clogged fluid supply line	Refill or flush the supply line. See "Flushing" in the <i>Operation</i> section.
	Clogged air spray gun or fluid dispensing applicator	Refer to the manual for your particular spray gun or fluid dispensing applicator.
	Regulator used above the rated flow capacity	User additional regulators. Refer to <i>Section 2 - Specifications</i> for ratings.

## 6 Service

When performing service on the Low Pressure Fluid Regulator, it may be necessary to disassemble the regulator. This section covers the disassembly, assembly, and tightening sequence necessary to perform required repairs.



**NOTE** Before performing service on the Low Pressure Fluid Regulator, shut off the pump, release all air and fluid pressure in the regulator, and disconnect the air and fluid lines.



### **WARNING!**

Allow only qualified personnel to perform the following tasks. Follow the safety instructions in this document and all other related documentation.



### **WARNING!**

System or material pressurized. Relieve pressure before opening. Failure to do so may result in serious injury.



**NOTE** Refer to Figure 7-1 for parts identification.


### Disassembly

1. Turn off the pump.
2. Release all air and fluid pressure in the regulator and disconnect the air and fluid lines.
3. Remove the connector (1), O-ring (2), and spring (3) from the bonnet (11).
4. Remove the ball (4), seat (5), and gasket (6) from the bonnet.
  - ▶ Handle the hard carbide ball and the seat with care.
5. Remove the screws (7), securing the regulator base (17) to the bonnet.
6. Separate the regulator base from the bonnet. Remove the jam nut (16), and washer (15) from the stem assembly (12).
7. Remove the diaphragm (14), and the gasket (13).
8. Thoroughly clean and inspect all parts. If necessary, replace worn or damaged parts.

### Assembly

1. Place the gasket, diaphragm (with the Teflon side facing up toward the regulator bonnet), and washer on the stem assembly.
2. Install the jam nut, and tighten to 20-25 N•m (15-19 ft-lb).
3. Install the assembled parts into the regulator base. Install the bonnet on the regulator base.
4. Install the gasket (6), valve seat (5), and ball (4) into the bonnet (11).
  - ▶ The seat can be turned upside down and reused.
5. Install the connector (1), O-ring (2) and spring (3). Tighten to 31-36 N•m (23-27 ft-lb).

## Tightening Sequence

 **NOTE** Refer to Figure 6-1 for the tightening sequence.

1. Tighten the screws to 0.8-1.1 N•m (7-10 in.-lb) according to the tightening sequence.
2. Tighten the screws to 8 N•m (70 in.-lb) three times, consecutively, to compensate for diaphragm relaxation.

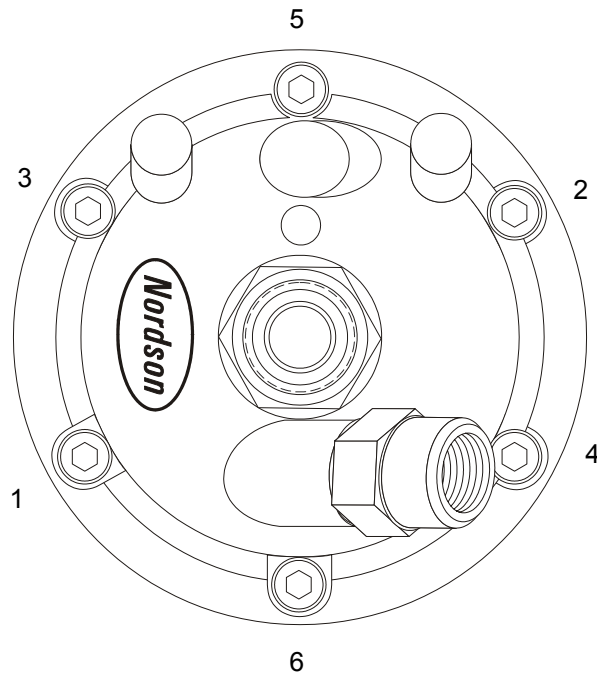


Figure 6-1 Tightening Sequence

## 7 Parts List

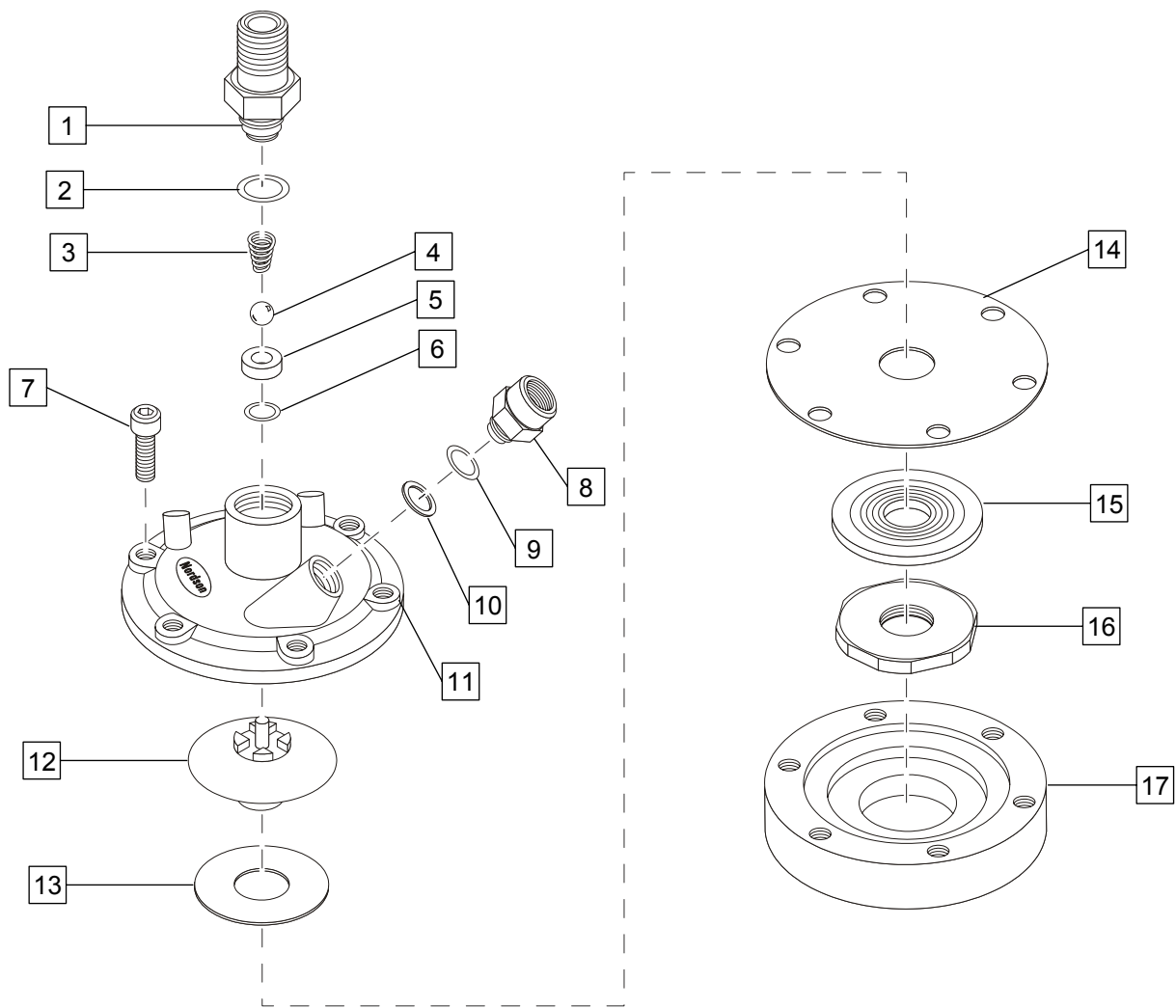
This section includes general information for ordering recommended spares and replacement parts for the Low Pressure Fluid Regulator. Refer to Figure 7-1. The callout numbers in the figure correspond with the item numbers in Table 7-1 and Table 7-2.

Table 7-1 Low Pressure Fluid Regulator

Item	Part	Description	Quantity	Note
---	333825	Regulator, Low Pressure	1	
1	-----	• Connector, Fluid Regulator	1	
7	-----	• Screw, M-6 x 1 x 16	6	
8	-----	• Connector, Fluid Regulator, 1/4-in. NPTF	1	
10	-----	• Gasket	1	
11	-----	• Bonnet, Fluid Regulator	1	
12	-----	• Stem Assembly	1	
15	-----	• Washer, Delrin, 1.94 x 0.686 x 0.130 in.	1	
16	-----	• Nut, Jam	1	
17	-----	• Base, Fluid Regulator	1	

Table 7-2 Low Pressure Fluid Regulator Rebuild Kit

Item	Part	Description	Quantity	Note
---	333850	Kit, Fluid Regulator, LP, Rebuild	1	
2	-----	• O-ring, Teflon	1	
3	-----	• Spring	1	
4	-----	• Ball, Carbide, 0.31250, 25	1	
5	-----	• Seat, Valve	1	
6	-----	• Gasket, Seat, Mylar	1	
9	-----	• O-ring	1	
13	-----	• Gasket, Rulon	1	
14	-----	• Diaphragm	1	



Item	Description	Item	Description
1	Connector	10	Gasket
2	O-ring	11	Bonnet
3	Spring	12	Stem Assembly
4	Ball	13	Gasket
5	Seat	14	Diaphragm
6	Gasket	15	Washer
7	Screw	16	Nut
8	Connector	17	Regulator Base
9	O-ring		

Figure 7-1 Low Pressure Fluid Regulator (Exploded View)



Asymtek Headquarters  
2762 Loker Avenue West  
Carlsbad, CA 92010-6603 USA  
Tel: (760) 431-1919