

Easy Coat[®] for Windows XP[®]

Software for Conformal Coating Systems

Features and Benefits

- **A graphical display interface allows off-line programming**
- **Separate operator and programmer access levels provide security and added process control**
- **Programmed mask regions and area coat commands reduce the number of coating instructions and increase production throughput**
- **Embedded instructions in the coating sequence enable on-the-fly actuation of the dispense valve**



Easy Coat[®] XP (ECXP) is a Windows XP[®] application for use with Nordson Asymtek's line of conformal coating systems. The software, written specifically for conformal coating, offers flexibility beyond generic motion control and dispensing packages in a familiar Windows XP environment.

The ECXP application incorporates standard Windows application tools (cut, copy and paste) and allows multiple instructions to be edited simultaneously. Comprehensive on-line help files aid in using the software to its fullest capability. Password-protected programmer screens ensure programs are not modified accidentally.

VISUAL SIMULATION PROGRAMMING

A digital (BMP or JPG) image of the PCB can be imported and used to simplify on-or off-line programming. Coating instruction coordinates can be taught by clicking on the graphical image. Standard graphics features like "zooming" and "panning" facilitate the teaching process. A projection of the coating passes is displayed over the PCB image to simulate the final coating results.

ECXP software's exclusive Mask Region feature allows the programmer to teach areas that do not

require coating. In production, the dispense valve will automatically turn off and on while traveling over these masked regions. This feature greatly reduces the number of coating instructions and programming time. The combination of the Mask Region feature and on-the-fly actuation of the dispense valve optimizes motion, greatly reduces coating time, and ultimately increases throughput.

PROCESS MONITORING

Key system events are automatically recorded in log files that can be configured to capture specific data relevant to process improvement. Process control data is also stored in a database that can be used for further analysis.

ECXP software supports other process control options offered by Nordson Asymtek, such as the Laser Fan Width Control and Flow Monitoring System modules. These controls, together with ECXP software, reduce conformal coating labor costs while simplifying process set-up and use. Software prompts are available in English, French, German, Japanese, and Spanish for improved usability worldwide.



SYSTEM COMPATIBILITY

ECXP software, a 32-bit Windows XP application, is compatible with all Nordson Asymtek conformal coating systems. Coating programs are portable and can easily be exchanged between similar model conformal coating systems.

GRAPHICAL INTERFACE

A digital image of the product can be imported for off-line programming. Coating instructions can be taught using the digital image and transferred to a production system when complete. Coating passes are blue, masked regions are gray, and selected instructions are white.

EDITING CAPABILITY

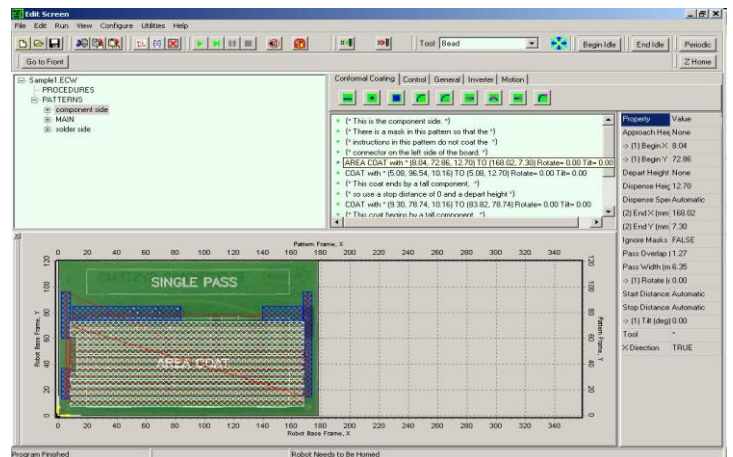
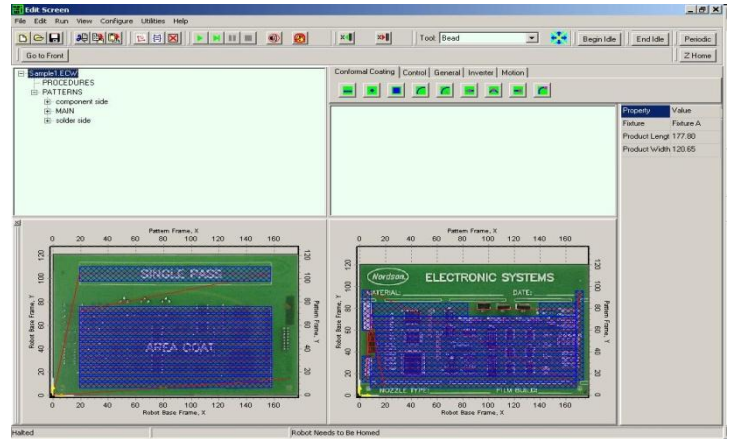
The ECXP application's innovative interface allows simultaneous viewing of the coating program instructions and details. The tree view on the left-hand side of the screen alphabetically lists the program subroutines, and program instructions are listed in the center. The detailed properties of the highlighted program instruction can be easily edited on the right. Coordinates may be viewed in either Metric or English units.

CONFIGURABLE RUN PROCEDURE BUTTONS

Customized buttons can be added to execute pre-generated procedures with a single mouse click.

OTHER KEY SOFTWARE FEATURES

- Configurable automated maintenance routines maximum production uptime.
- The ECXP software's Characterization Wizard is used to synchronize the materials' flow behavior with the applicator's response to on/off's and dispensing speed.
- The selected product image is displayed on the operator screen for quick verification.
- Short cut features like "multiple pattern placement," "pattern rotate," and "step and repeat" simplify the programming process.



**For more information,
speak with your local
representative or
contact your regional
office.**

Nordsonasymtek.com

North America

Headquarters
Carlsbad, CA, USA
+1.760.431.1919
info@nordsonasymtek.com

China

Shanghai
+8621.3866.9166
info@asymtek.cn

Beijing
+8610. 8453.6388
info@asymtek.cn

Guangzhou
+8620.8554.0092
info@asymtek.cn

Europe

Maastricht, Netherlands
+31. 43.352.4466
cs.europe@asymtek.com

Japan

Tokyo
+81.3.5762.2801
Info-jp@nordsonasymtek.com

Korea

Seoul
+82.31.765.8337
info@nordsonasymtek.com

India

Chennai
+91. 44.4353.9024
info@nordsonasymtek.com

S.E. Asia/Australia

Singapore
+65.6796.9514
info@nordsonasymtek.com

Taiwan

+886.229.02.1860
info@nordsonasymtek.com

Nordson ASYMTEK
+1.760.431.1919 Phone
info@nordsonasymtek.com Email
2747 Loker Avenue West
Carlsbad, CA USA 92010-6603
www.nordsonasymtek.com

Reformatted 2011-06-15

