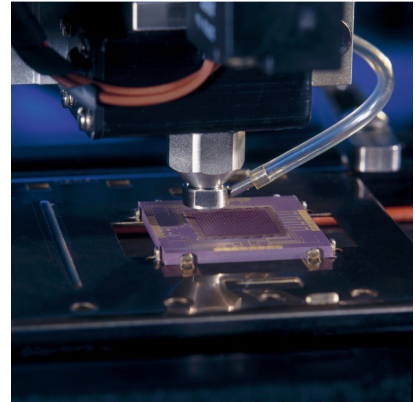


DJ-2200 DispenseJet[®]

Jetting Technology for Precise Flux Applications

Features and Benefits

- **Changes in part styles can be accommodated without downtime and tooling changes**
- **Reduces flux waste and improves material utilization with minimal maintenance**
- **Separates flux and chip placement operations for higher throughput**
- **Improves quality of flip chip soldering with lower residues**
- **Provides micro-dispensing of thin layers of fluid as low as 5 μm (0.2 mils) thick for thin flux materials**



Flux application using the DispenseJet[®] DJ-2200 is a superior alternative to dipping and screen printing for flip chip assembly operations. Jetting offers both speed and accuracy, and eliminates contamination and material waste associated with conventional methods. Jetting allows 100% coverage with a minimal amount of flux (typically 5 μm), producing less residue after reflow. Less residue results in better package reliability.

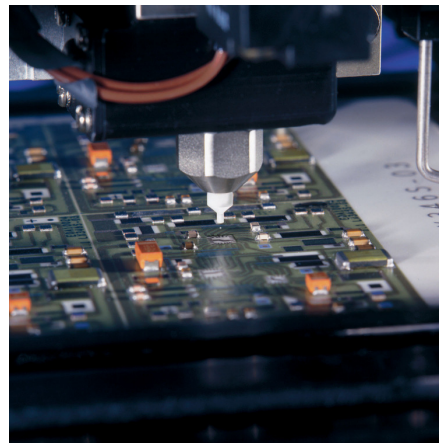
Jetting replaces the high-maintenance dipping that is often performed with pick and place equipment. By separating the fluxing and chip placement operations, significant throughput can be achieved in flip chip assembly operations. The DispenseJet can also be used for coating with other fluid materials, like photo resist for non-round substrates.

Jetting lets you accommodate changes in part styles or substrates without costly downtime and tooling changes. Dispensing parameters can be changed quickly and easily using programmed patterns stored in a personal computer.

In the jetting process, the DispenseJet valve moves in an X, Y plane to dispense a variety of pre-programmed patterns, which create a uniform film of flux. There is no movement required in the Z-axis during or between the dispense cycles. Time

elapsed between cycles is minimized, increasing your throughput and productivity.

The DispenseJet[®] valve is capable of dispensing dots and coaxial air-assisted lines and dots. When equipped with the coaxial air option, jetted flux is followed by a pulse of air, which aids flux flow and helps overcome the surface tension present on some substrates and parts.



How it works: The DJ-2200 DispenseJet® valve uses a patented high-precision mechanism to control exact volumes of flux dispensed directly from the nozzle into the substrate. During each dispensing cycle, solenoid-driven air pressure retracts an internal plunger and an exact amount of material is fed into the fluid chamber under controlled pressure. Then, the spring-driven plunger returns to its seat with an impact force that ejects the fluid onto the substrate. Dot consistency is aided by a built-in heater that controls fluid temperature to facilitate the jetting process. The syringe/reservoir is completely sealed, allowing constant, full pressure at all times. This allows high-speed, non-contact jetting of low-viscosity materials like rosin and no-clean fluxes with sharp, clean cut-off.

Specifications: DJ-2200

Valve:

Operating Voltage:	24VDC
Weight:	380 g (without syringe)
Syringe:	5, 10 or 30 cc
Reservoir	6 or 20 oz.

Electrical:

Solenoid:	24VDC, 12.7 watts
Heater:	8.5 watts

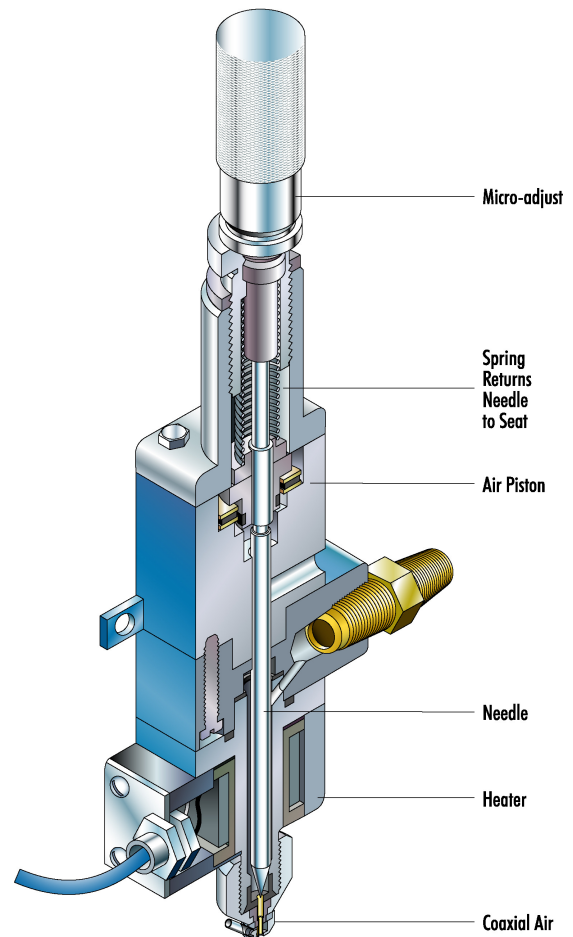
Pneumatic:

Air Solenoid Pressure:	6.9 Bar (100 psi)
Fluid Pressure:	0-2 kg/cm ² (0-28 psi)

Nozzle:

Orifice Diameter:	0.2 to 1.2 mm (0.008 to 0.05 in.)
-------------------	-----------------------------------

* Standard jet nozzles dispense lines typically 3mm (0.125 inch) wide.
Wide Nozzles are available for lines 10mm (0.4 inch) wide.



For more information, speak
with your local representative
or contact your regional office.

Nordsonasymtek.com

North America

Headquarters

Carlsbad, CA, USA

+1.760.431.1919

info@nordsonasymtek.com

China

Shanghai

+8621.3866.9166

info@asymtek.cn

Beijing

+8610. 8453.6388

info@asymtek.cn

Guangzhou

+8620.8554.0092

info@asymtek.cn

Europe

Maastricht, Netherlands

+31. 43.352.4466

cs.europe@asymtek.com

Japan

Tokyo

+81.3.5762.2801

Info-jp@nordsonasymtek.com

Korea

Seoul

+82.31.765.8337

info@nordsonasymtek.com

India

Chennai

+91. 44.4353.9024

info@nordsonasymtek.com

S.E. Asia/Australia

Singapore

+65.6796.9514

info@nordsonasymtek.com

Taiwan

+886.229.02.1860

info@nordsonasymtek.com

Nordson ASYMTEK

+1.760.431.1919 **Phone**

info@nordsonasymtek.com Email

2747 Loker Avenue West

Carlsbad, CA USA 92010-6603

www.nordsonasymtek.com

Content Published 2004- 12- 7

Reformatted 2011-04-21

