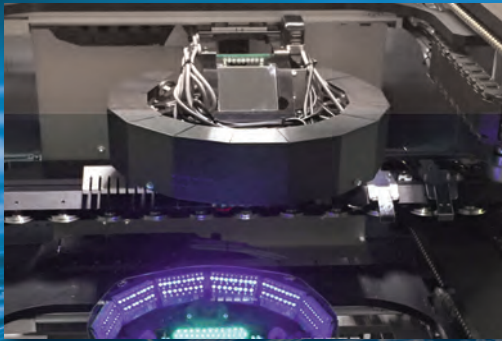


AOI solutions you
can count on.



FX-942UV ACI / AOI

In-Line Dual Sided Optical Inspection for conformal coating and parts

Nordson YESTECH's advanced multiple camera imaging technology offers high-speed inspection with exceptional defect coverage. With dual sided viewing (top-down and bottom up) cameras and UV lighting the FX-942 inspects conformal coating coverage and verifies correct part assembly in SMT or THT applications, enabling users to improve quality and enhance yields.

Advanced High Power UV Lighting and newly available image processing technology integrate several techniques, including coverage inspection, color inspection, normalized correlation and rule-based algorithms, to provide complete inspection coverage with an unmatched low false failure rates.

Configurable for several line positions, the FX-942 is equally effective for coating, pre/post-cure and final assembly inspection. Off-line programming maximizes machine utilization and real-time SPC monitoring provides a valuable yield enhancement solution.

Features:

- Top down and bottom up imaging
- Optional side viewing cameras
- Proprietary UV lighting
- 100 mm clearance for tall components
- Traceability
- Optional thickness measurement

Automated Inspection for:

- Conformal coat coverage
- Micro Coatings / dispensed materials
- Flux coverage
- Selected areas of non-coverage
- Delamination / cracks and bubbles
- Part presence / Correct part / polarity
- SPC, barcode reading and archiving of board image with inspection results

FX-942UV ACI / AOI In-line Dual Sided Conformal Coat inspection

Specifications

Model

FX-942UV

Multi-function system with top-down viewing,
bottom up viewing and optional side cameras
Thickness measurement

Optional Upgrades:

Specifications

Throughput: Up to 30 sq. in./sec.
Maximum Board Size: 15.5" x 15.5" (395 mm x 395 mm)
Clearance: 4" (100mm) top side and 2" (50mm) bottom
False Calls: <500 PPM (<0.05% typical)
Defects Detected: Coatings and dispensed material coverage, non-coverage,
cracks and delamination, SMT and THT part defects.

Software

Algorithms: Conformal Coating Inspection
Color detection, OCV, OCR, Barcode recognition,
both image and rules based algorithms.
Data Requirements: None
CAD Translation Package: Not required
Programming Skill Level: Technician or operator
Operating System: Windows 7
Off-line Software: Optional - Rework, Review and Program Creation Basic
SPC Software: Real-time local and remote monitoring of first pass yield,
defect trends, and machine utilization.
Data Outputs: Text, SQL, ODBC, MS Access, XML

Hardware

Material Handling: SMEMA, dual direction auto width conveyor,
pass / fail signals, board clamping
Lighting: Proprietary UV Lighting multi-angle LED
Imager: Up to 18 megapixel color imaging sensor each side
12 or 8 micron pixel size

Facilities

Power: 110-220VAC, 50/60 Hz, 15 amps
Air input: 60 PSI min., 1/4" air hose, 2 CFM
Footprint: 39" x 52" x 60" (1000mm x 1329mm x 1531mm)
Weight: 950 lbs (430 kg)
Machine Installation: < 1 hour

Nordson YESTECH

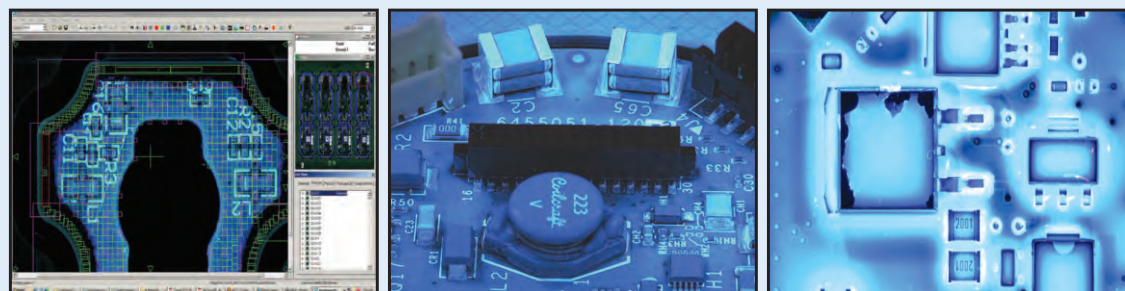
USA Headquarters:
2747 Loker Ave. West
Carlsbad, CA USA 92010
+1.760.918.8471 **Phone**
sales@nordsonyestech.com

China:
#137 Guoshoujing Road
Zhangjiang Hi-Tech Park
Pudong,
Shanghai 201203, P.R.China
+86 21 3866 9166 **Phone**

Southeast Asia:
2 Corporation Road
#03-11/12
Corporation Place 618494
Singapore
+65 6749 0538 **Phone**

Europe:
25 Faraday Road
Aylesbury
Buckinghamshire
HP19 8RY, UK
+44 (0) 1962 832654 **Phone**

Japan:
TOC Ariake Building West
Tower 17F
3-5-7 Koto-ku Ariake
Tokyo, 135-0063, Japan
+81 3 5762 2801 **Phone**



Automated inspection for conformal coat.

Side angle viewing cameras.

Defect image of missing conformal coat.

